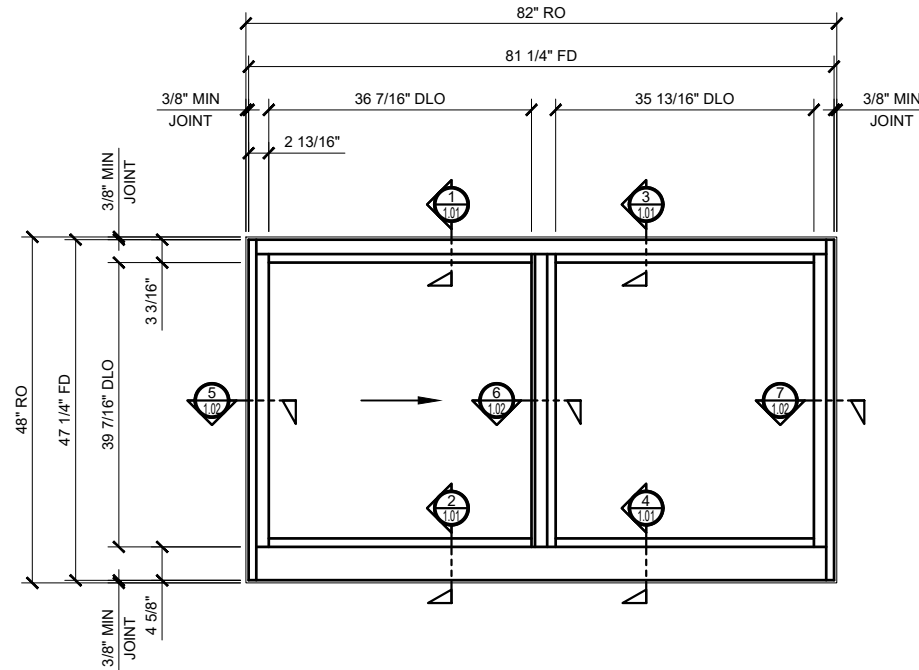


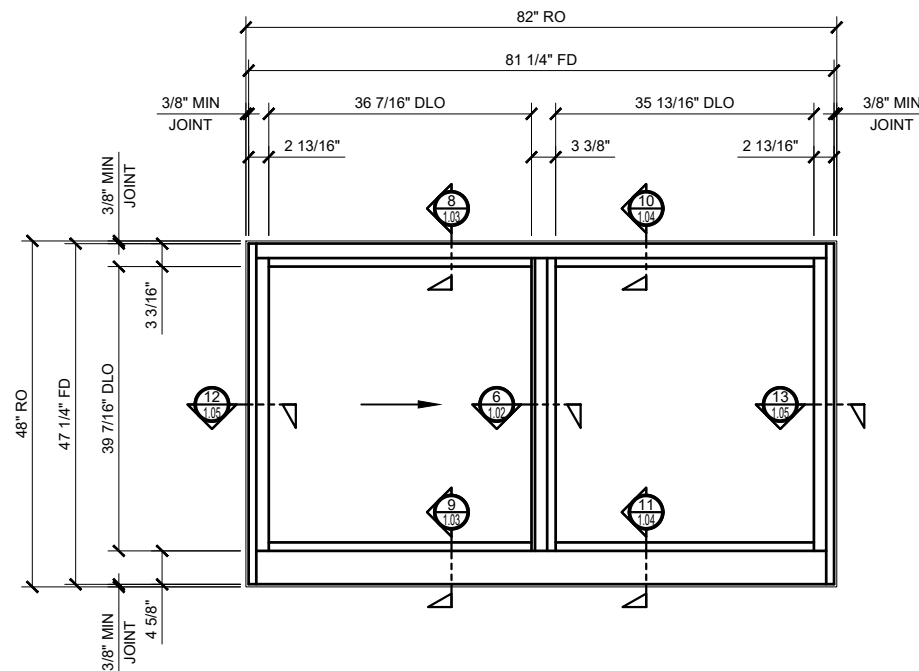
HORIZONTAL SLIDING WINDOW - SERIES 8200

1" = 1'-0"

GLASS SIZING NOTE:
REFERENCE U.S. ALUMINUM
CATALOGS AND WEBSITE'S
LOAD CHARTS FOR SIZING
GUIDELINES.



SERIES 8200 HORIZONTAL SLIDING WINDOW ELEVATION - BLOCK INSTALL



SERIES 8200 HORIZONTAL SLIDING WINDOW ELEVATION - FIN INSTALL

8200 SERIES SPECIFICATIONS

The Series 8200 Horizontal sliding Window offers that rare combination of smooth operation, durability, and toughness. It has a 4-1/2" (114) deep frame designed to match typical building conditions, including our entrances and storefronts. An efficient thermally insulated frame accepts 1" (25) glazing. Available in an array of architectural coatings and anodized finishes.

- 4 1/2" (114) Deep Frame to Match Typical Building Conditions
- Tested to AAMA CW60
- Accepts 1" (25) Glazing
- Thermally Insulated - NFRC Certified
- U-Factor as low as 0.34
- Choice of Block or Fin Frame
- Dry Glazed
- Self Locking Latch and Tandem Adjustable Rollers for ease of Operation
- Accessories Such as Mulling Bars, Subsills, Head and Jamb Channels are Available
- Available in an Array of Architectural Coatings and Anodized Finishes

STRUCTURAL DISCLAIMER:

ALL CUSTOMERS WHO IN ANY WAY UTILIZE THIS PRODUCT ARE SOLELY RESPONSIBLE TO CONSULT A STRUCTURAL ENGINEER TO DETERMINE THE SUITABILITY OF THE PRODUCT FOR THE INTENDED USE AND SITE CONDITIONS. ALL INSTALLERS MUST BE QUALIFIED AND HAVE PROFESSIONAL KNOWLEDGE ABOUT COMPLIANCE WITH LOCAL, STATE AND FEDERAL REGULATIONS, SAFETY FACTORS, AND THE APPROPRIATE CHOICE OF FIXING MATERIAL AND PROCEDURES.

STANDARD ABBREVIATIONS

RO	ROUGH OPENING
FD	FRAME DIMENSION
DLO	DAYLIGHT OPENING
DO	DOOR OPENING
DD	DOOR DIMENSION
SMC	SURFACE MOUNTED CLOSER
OHCC	OVERHEAD CONCEALED CLOSER

Revisions By:

DESCRIPTION:
CRL WINDOWS
HORIZONTAL SLIDING WINDOW
SERIES 8200
FOR 1" GLASS

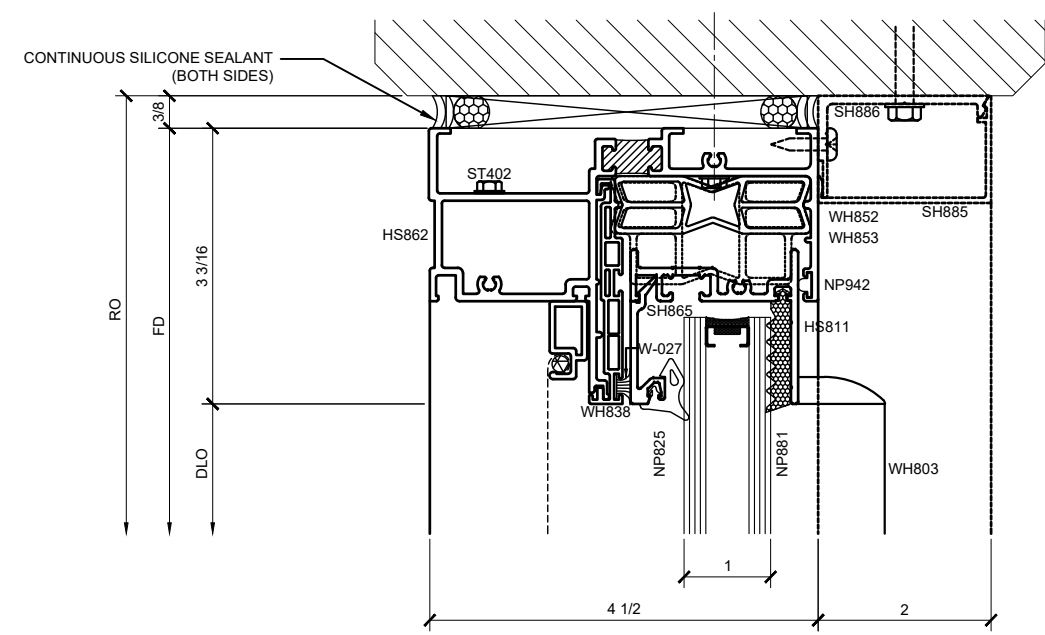
Drawn By: TMG
Date: 06/26/15
Scale: AS NOTED
File Name:
8200.dwg
Sheet

Revisions By:

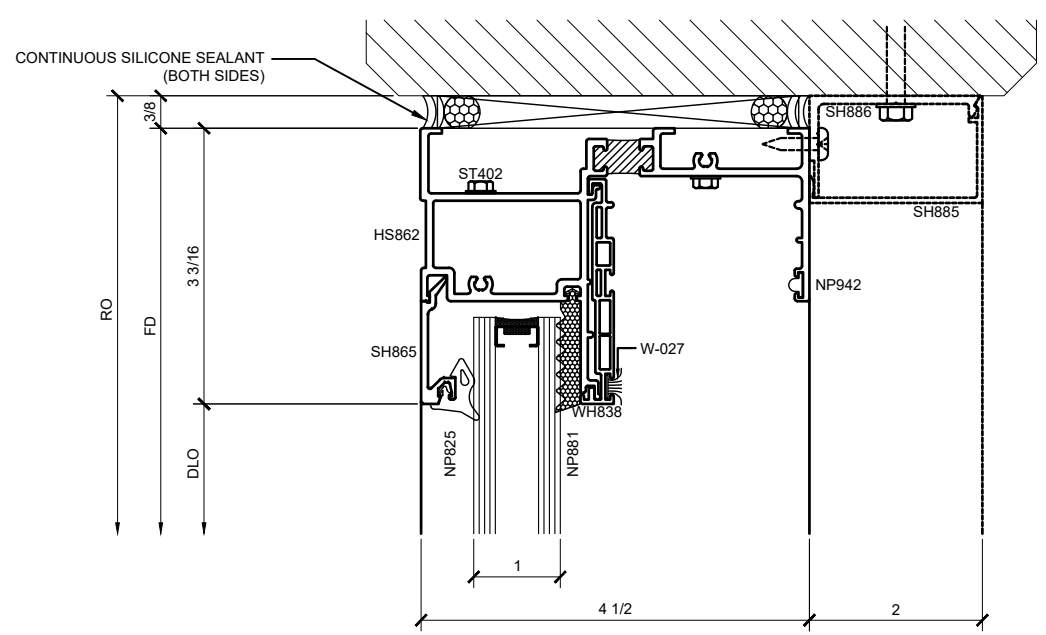


Description:
CRL WINDOWS
HORIZONTAL SLIDING WINDOW
SERIES 8200
FOR 1" GLASS

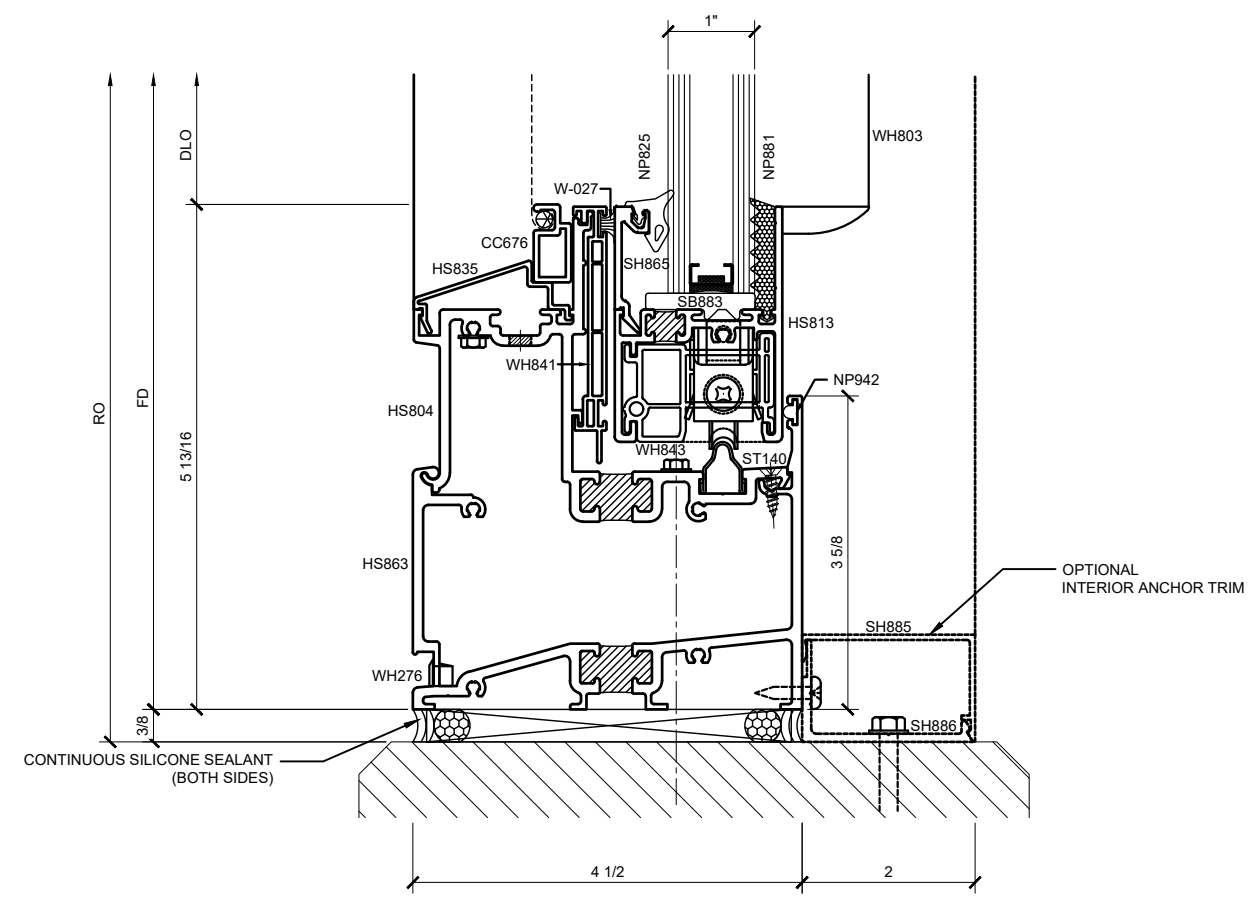
Drawn By: TMG
Date: 06/26/15
Scale: AS NOTED
File Name:
8200.dwg
Sheet



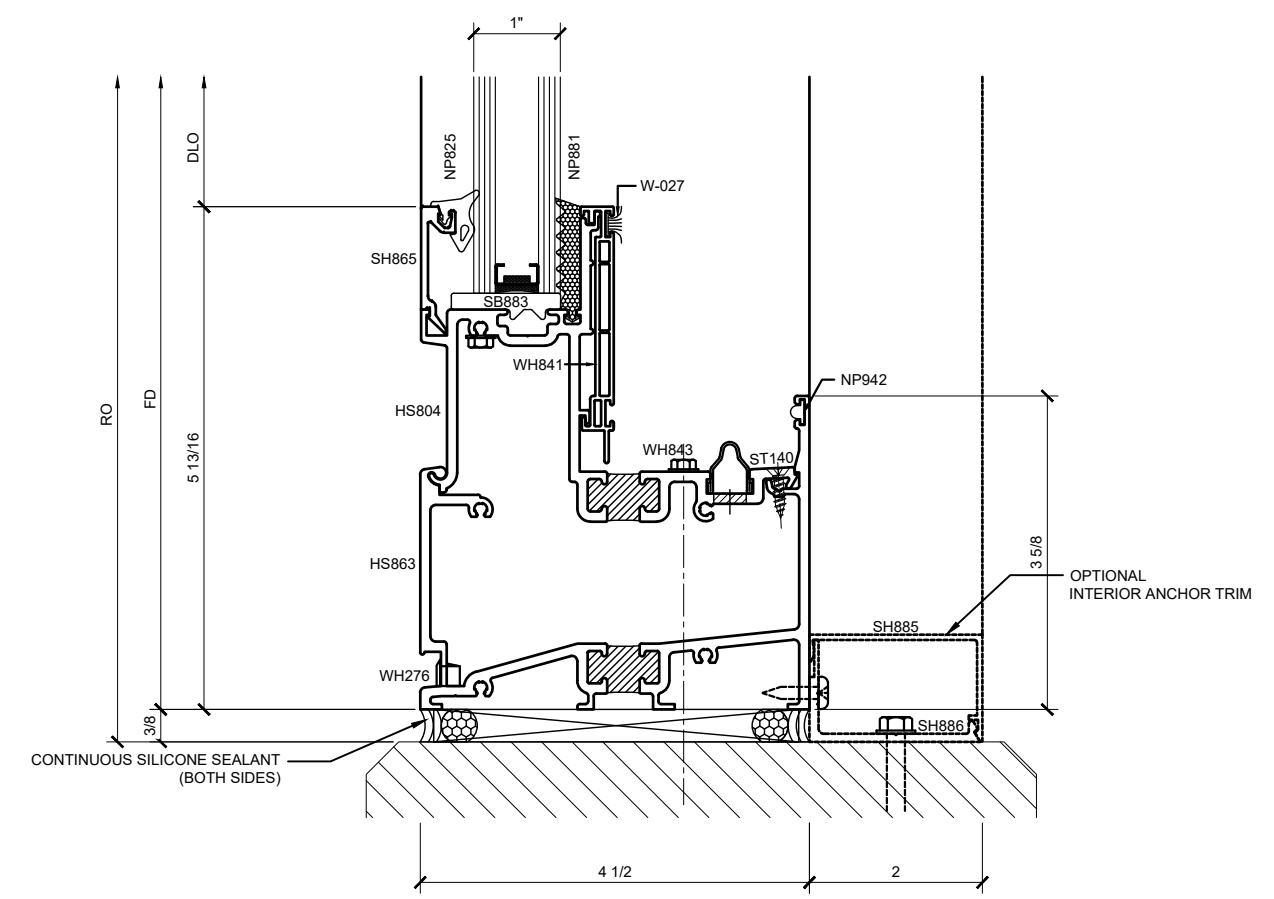
1 SECTION DETAIL AT HEAD
ARCH REF: N/A 1'-0"=1'-0"



3 SECTION DETAIL AT HEAD
ARCH REF: N/A 1'-0"=1'-0"



2 SECTION DETAIL AT SILL
ARCH REF: N/A 1'-0"=1'-0"



4 SECTION DETAIL AT SILL
ARCH REF: N/A 1'-0"=1'-0"

HORIZONTAL SLIDING WINDOW - 8200 SERIES DETAILS - BLOCK INSTALL

Revisions By:

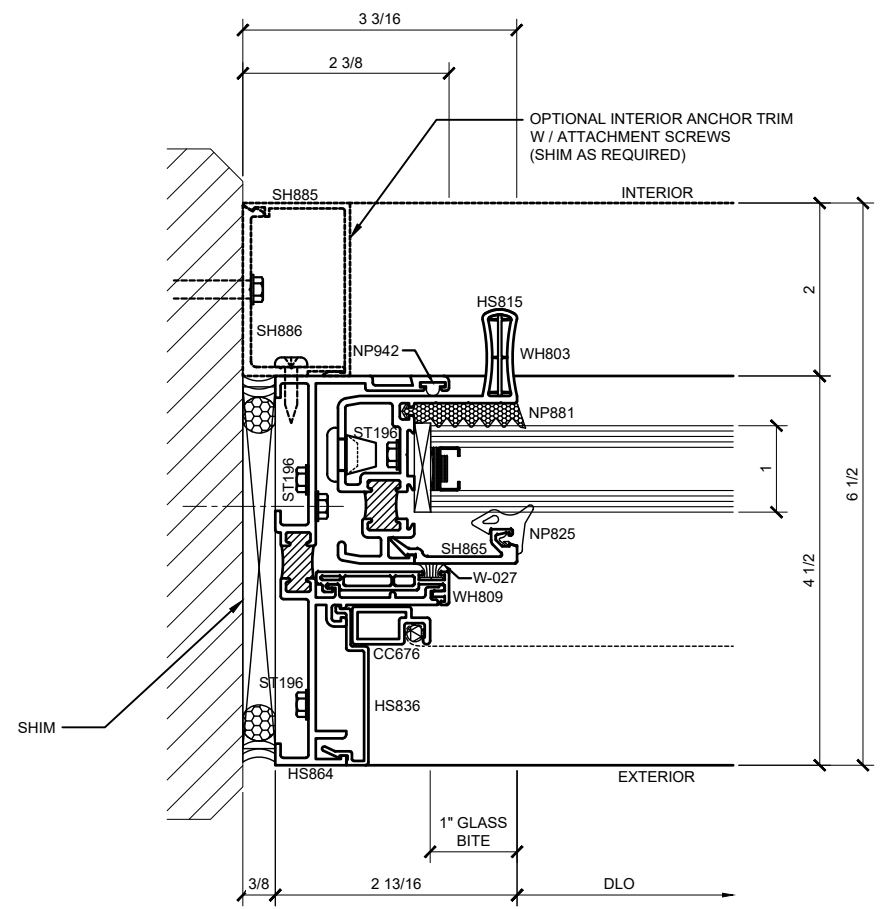
CRL ALUMINUM
C.R. LAURENCE CO. ARCHITECTURAL PRODUCTS
2503 E. Vernon Avenue, Los Angeles, CA 90058-1897
PH: (800) 421-6144 FX: (800) 857-7501 www.crlaurence.com

Description:
CRL WINDOWS
HORIZONTAL SLIDING WINDOW
SERIES 8200
FOR 1" GLASS

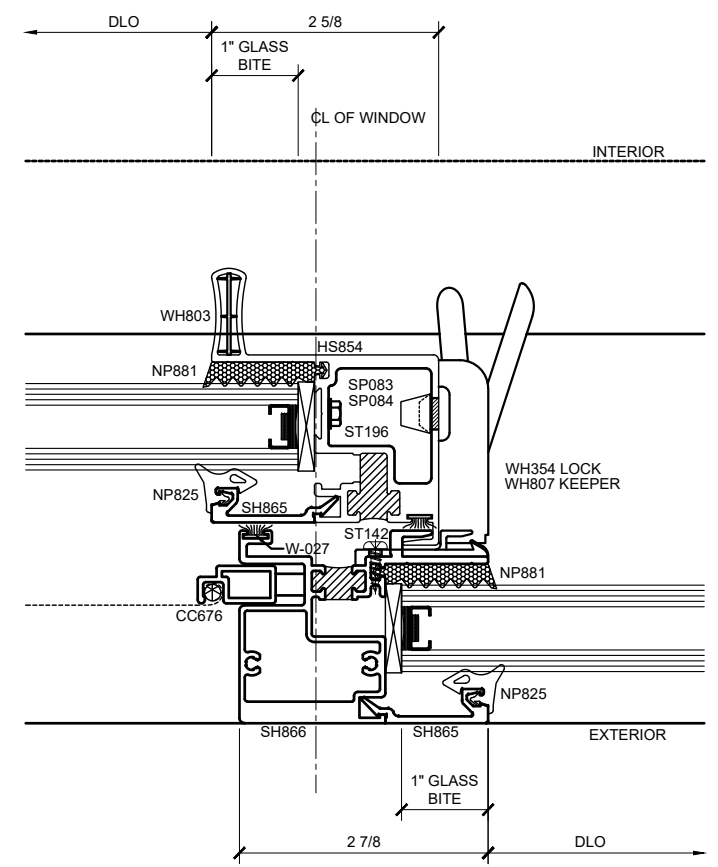
Drawn By: TMG
Date: 06/26/15
Scale: AS NOTED
File Name:
8200.dwg

Sheet

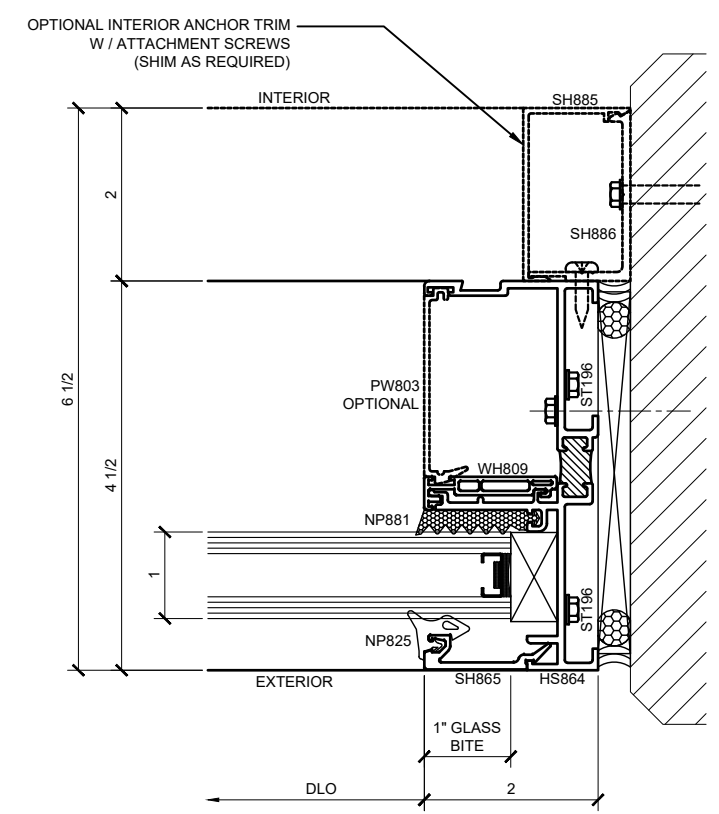
1.02



⑤ SECTION DETAIL AT JAMB
ARCH REF: N/A 1'-0"=1'-0"



⑥ SECTION DETAIL AT JAMB
ARCH REF: N/A 1'-0"=1'-0"



⑦ SECTION DETAIL AT JAMB
ARCH REF: N/A 1'-0"=1'-0"

HORIZONTAL SLIDING WINDOW - 8200 SERIES DETAILS - BLOCK INSTALL

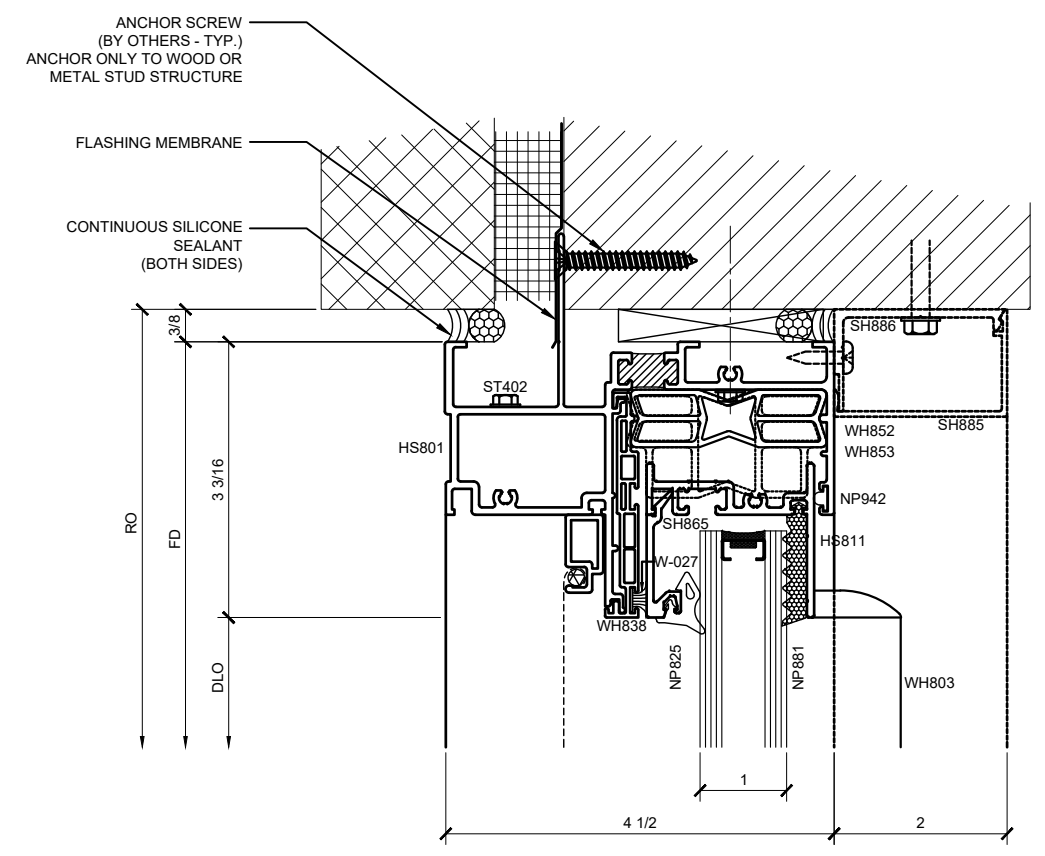
Revisions By:

CRL ALUMINUM
C.R. LAURENCE CO. ARCHITECTURAL PRODUCTS
2503 E. Vernon Avenue, Los Angeles, CA 90058-1897
PH: (800) 421-6144 FX: (800) 857-7501 www.crlaluminum.com

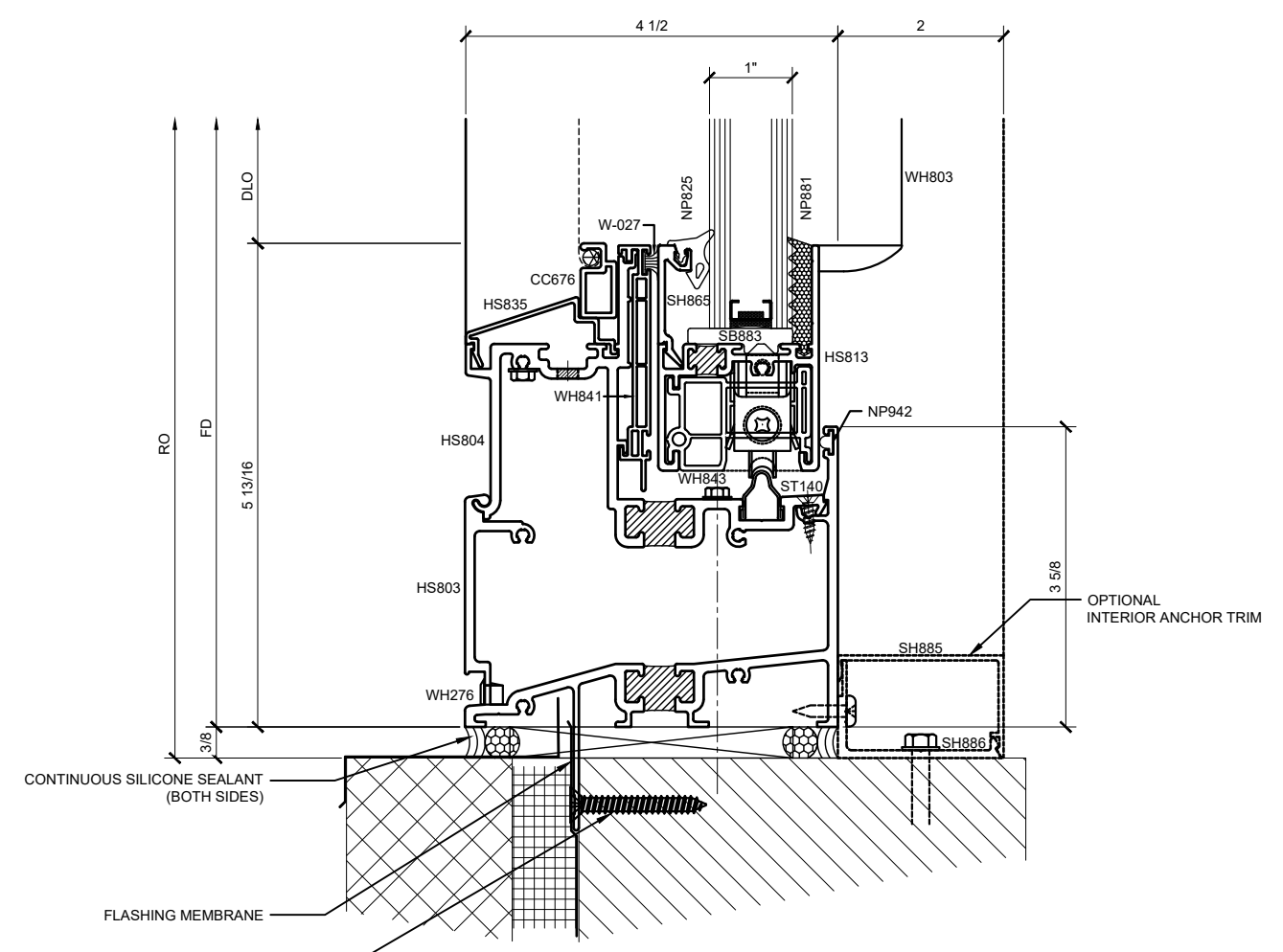
Description:
CRL WINDOWS
HORIZONTAL SLIDING WINDOW
SERIES 8200
FOR 1" GLASS

Drawn By: TMG
Date: 06/26/15
Scale: AS NOTED
File Name:
8200.dwg

Sheet
1.03



8 SECTION DETAIL AT HEAD
ARCH REF: N/A 1'-0"=1'-0"



9 SECTION DETAIL AT SILL
ARCH REF: N/A 1'-0"=1'-0"

HORIZONTAL SLIDING WINDOW - 8200 SERIES DETAILS - FIN FRAME INSTALL

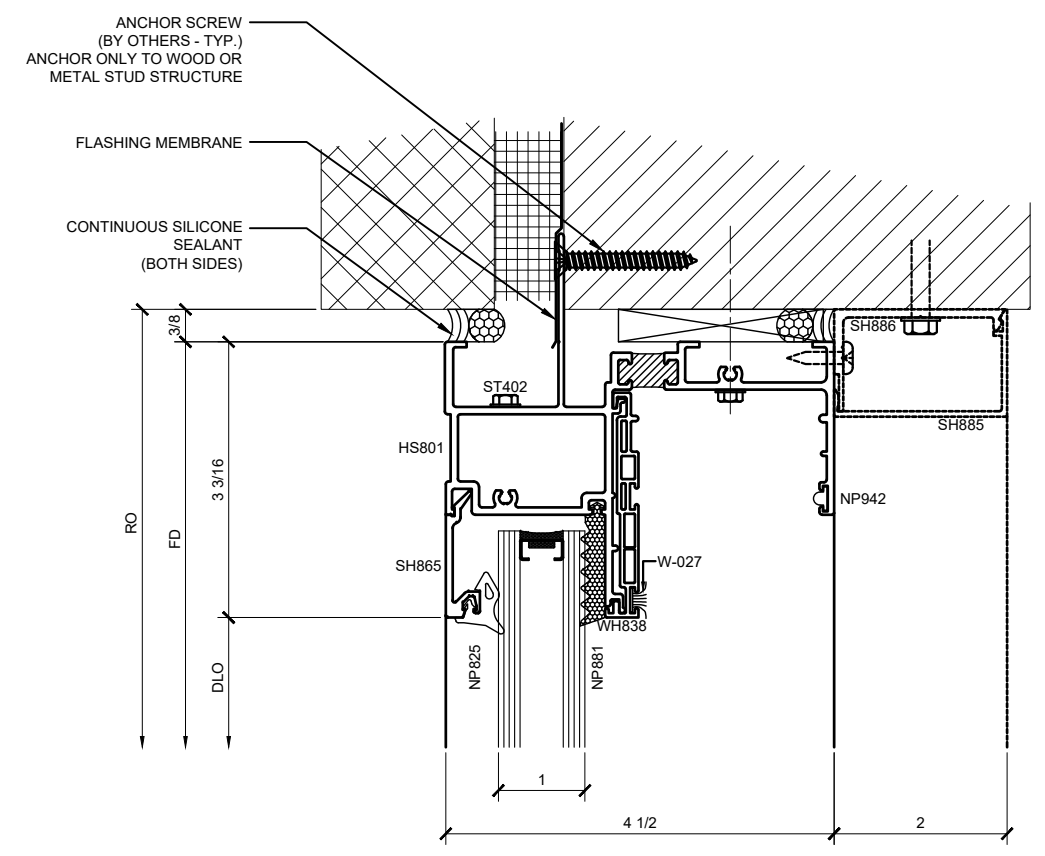
Revisions By:

CRL ALUMINUM
C.R. LAURENCE CO. ARCHITECTURAL PRODUCTS
2503 E. Vernon Avenue, Los Angeles, CA 90058-1897
PH: (800) 421-6144 FX: (800) 857-7501 www.crlaurence.com

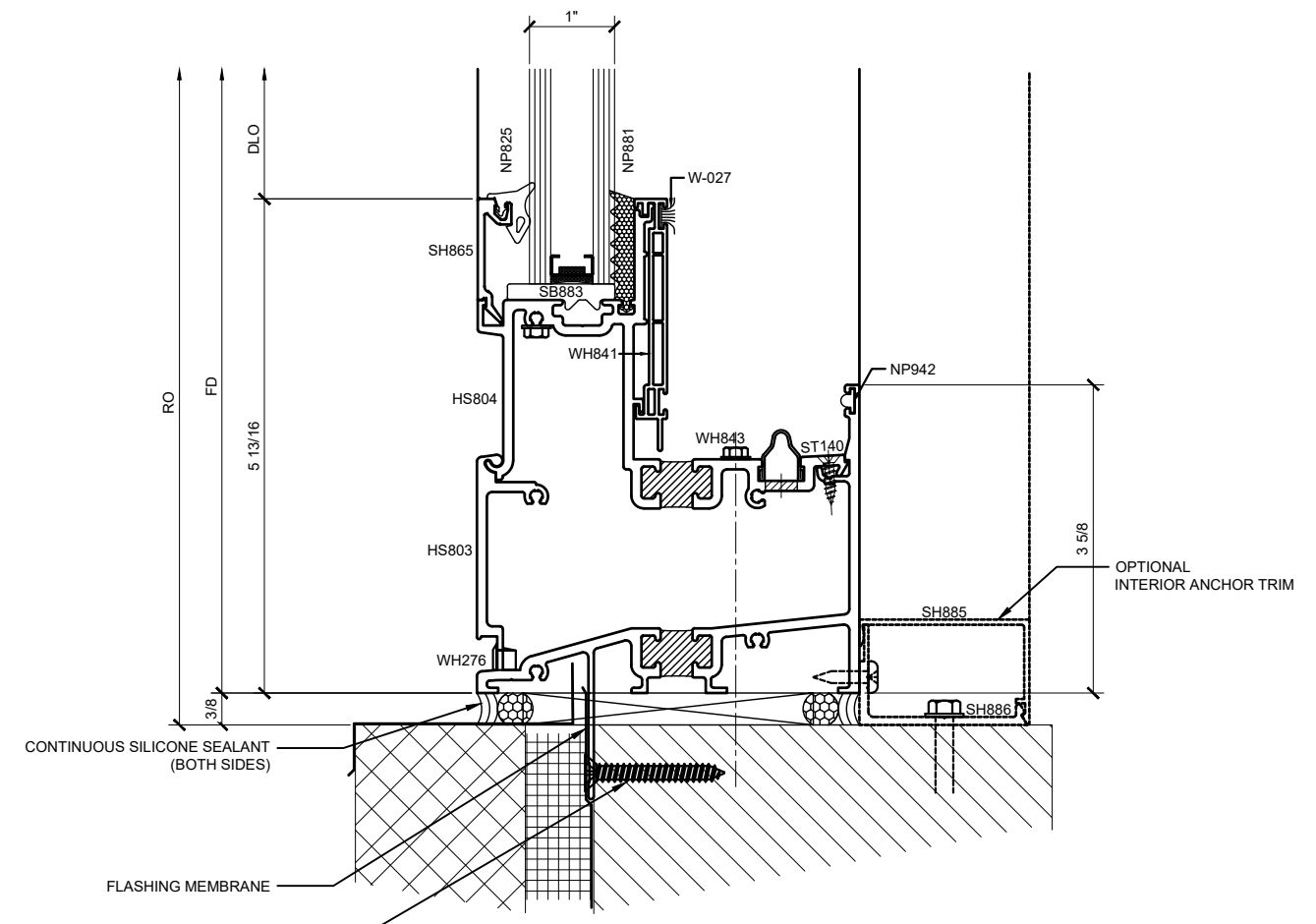
Description:
CRL WINDOWS
HORIZONTAL SLIDING WINDOW
SERIES 8200
FOR 1" GLASS

Drawn By: TMG
Date: 06/26/15
Scale: AS NOTED
File Name:
8200.dwg
Sheet

1.04



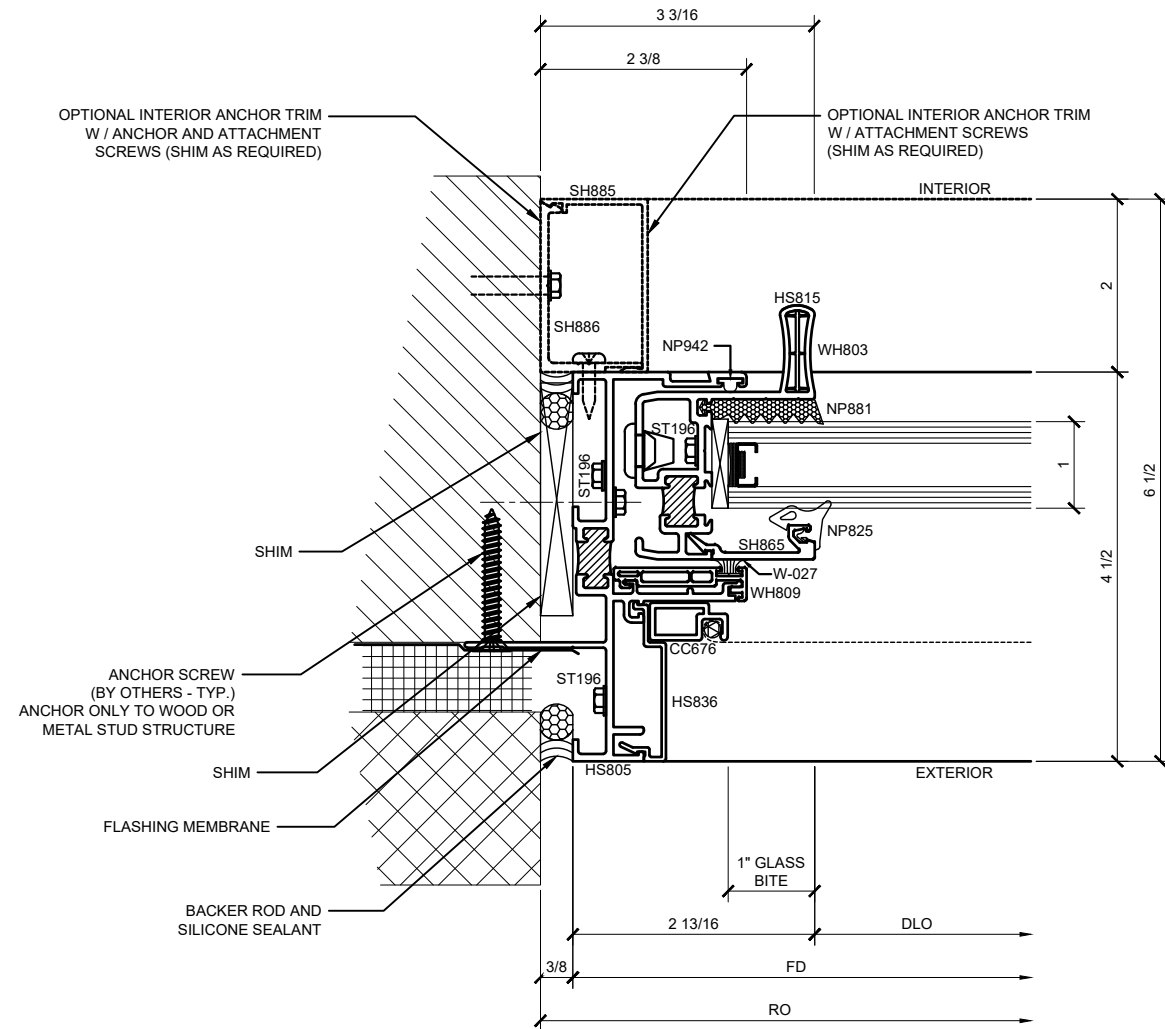
10 SECTION DETAIL AT HEAD
ARCH REF: N/A 1'-0"=1'-0"



11 SECTION DETAIL AT SILL
ARCH REF: N/A 1'-0"=1'-0"

HORIZONTAL SLIDING WINDOW - 8200 SERIES DETAILS - FIN FRAME INSTALL

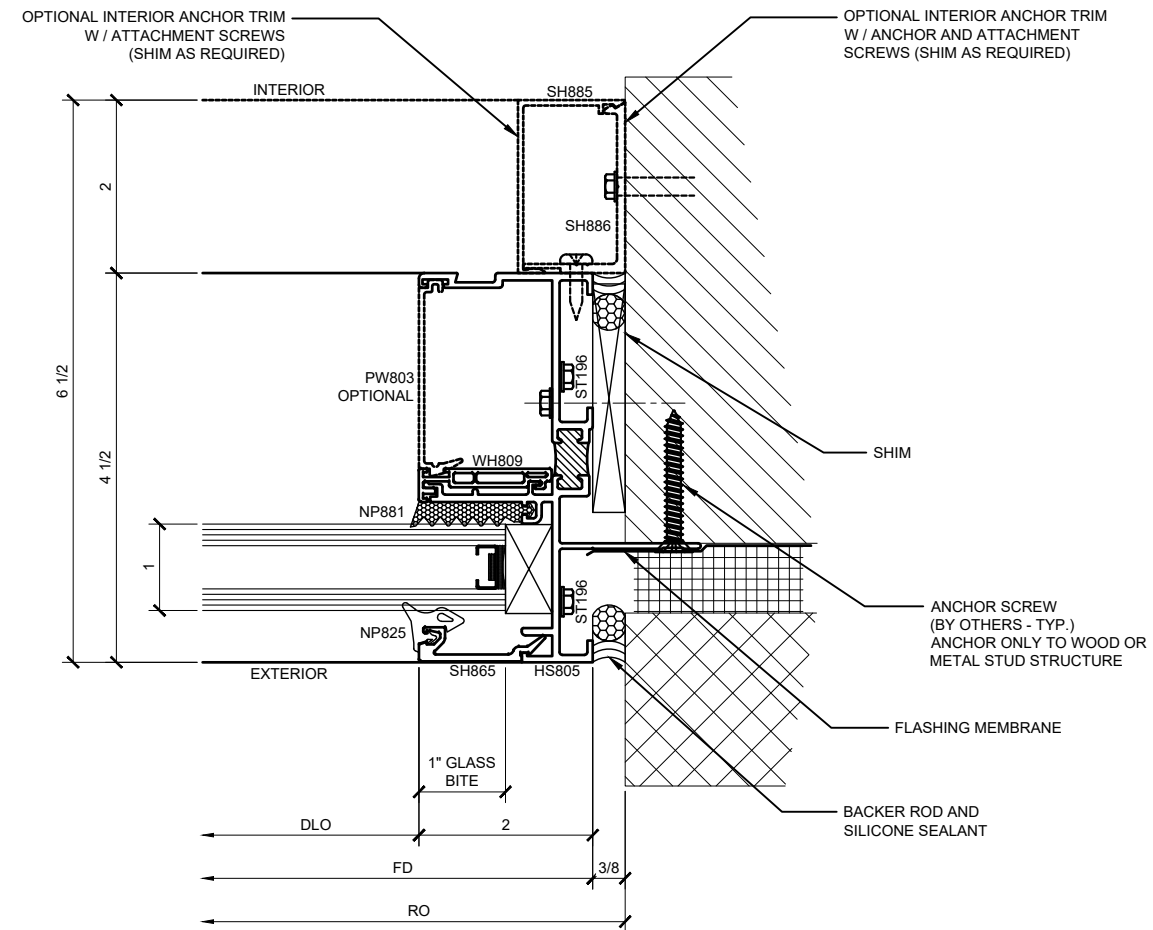
Revisions By:



12 SECTION DETAIL AT JAMB

ARCH REF: N/A

1'-0"=1'-0"



13 SECTION DETAIL AT JAMB

ARCH REF: N/A

1'-0"=1'-0"

HORIZONTAL SLIDING WINDOW - 8200 SERIES DETAILS - FIN FRAME INSTALL

Description: CRL WINDOWS HORIZONTAL SLIDING WINDOW SERIES 8200 FOR 1" GLASS

Drawn By: TMG

Date: 06/26/15

Scale: AS NOTED

File Name:

8200.dwg

Sheet