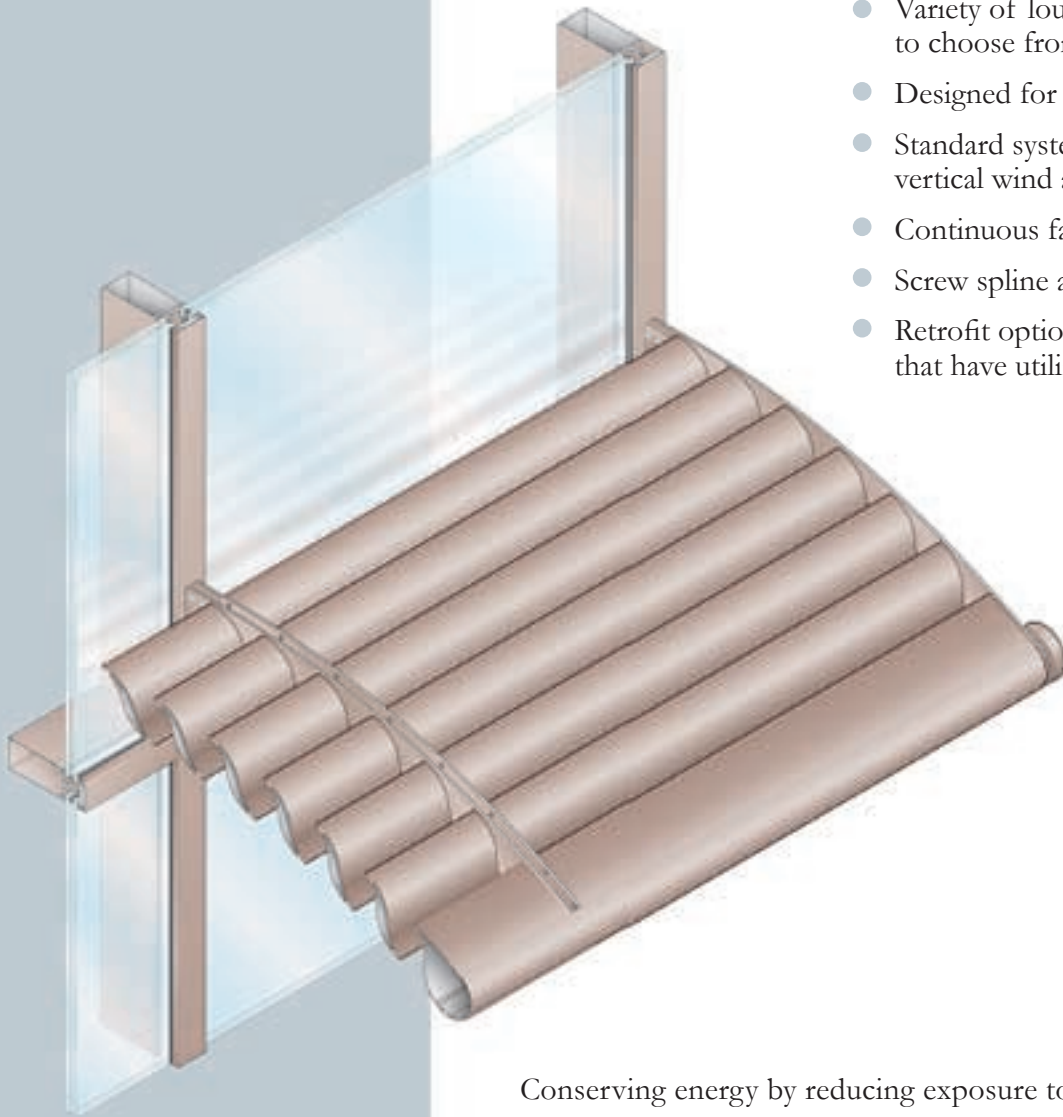


# SUN CONTROL SYSTEMS

## SERIES 3600 SUN SHADE

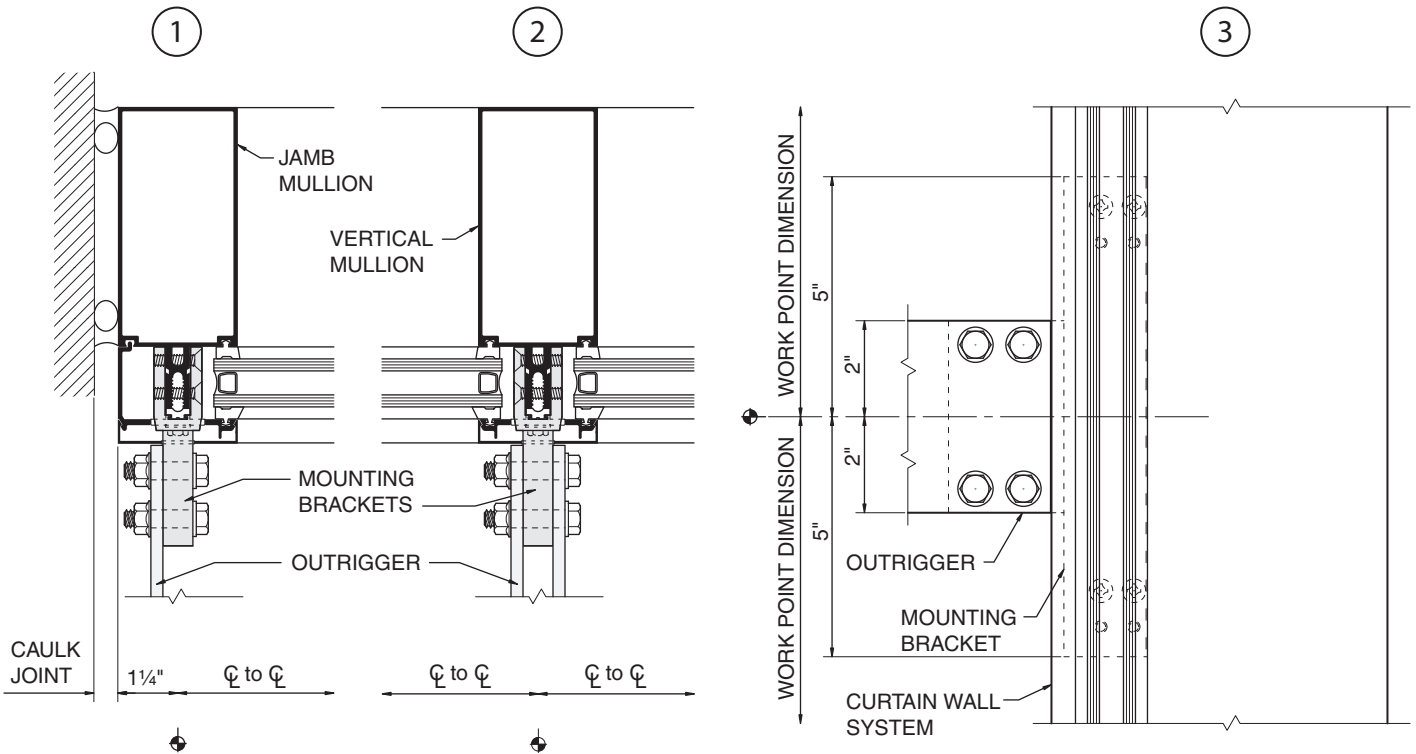
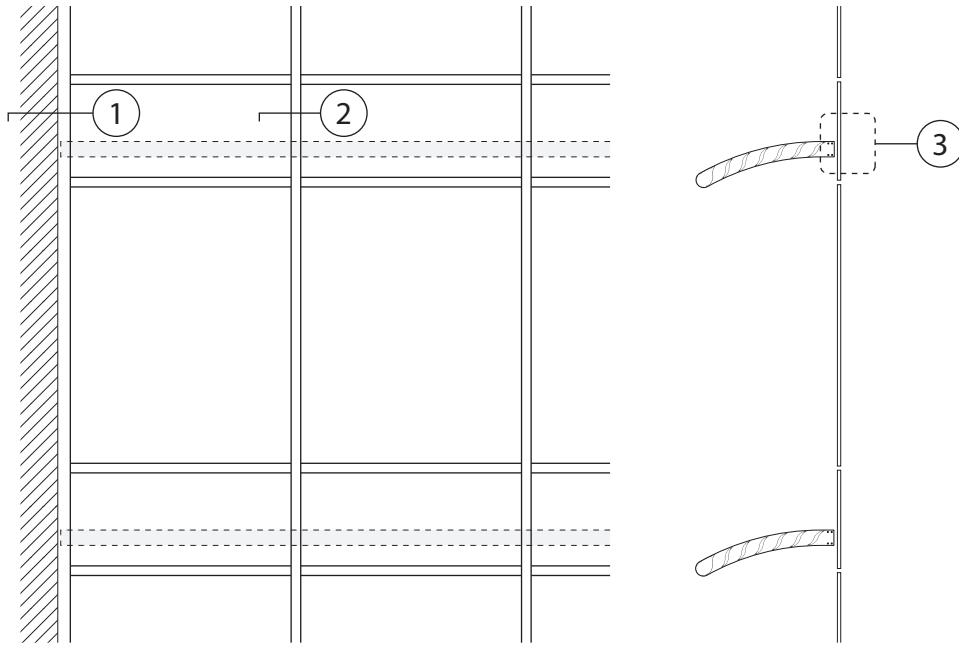


- 30" and 36" projection available
- Variety of louvers and fascia profiles to choose from
- Designed for 3250 Curtain Wall
- Standard system meets 60 psf combined vertical wind and snow loads
- Continuous fascia cover
- Screw spline assembly
- Retrofit options for existing buildings that have utilized Series 3250 CW

Conserving energy by reducing exposure to direct U.V. rays while allowing for ambient day lighting is a major focus of today's environmentally conscious USGBC guidelines. United States Aluminum is producing the LEED™-friendly, Series 3600 Sun Shade to meet these needs. The screw spline assembly design features a choice of outrigger profiles with a variety of louvers and fascias available. The Series 3600 Sun Shade, available in painted and anodized finishes, works with the Series 3250 Curtain Wall System.



# SERIES 3600 SUN SHADE TYPICAL DETAILS



SCALE - 1/4" = 1"



California - 800.766.6063  
Chicago - 800.323.8480  
Texas - 800.627.6440

South Carolina - 800.462.5668  
Canada BC - 888.889.3899  
Canada Ont. - 800.796.6636